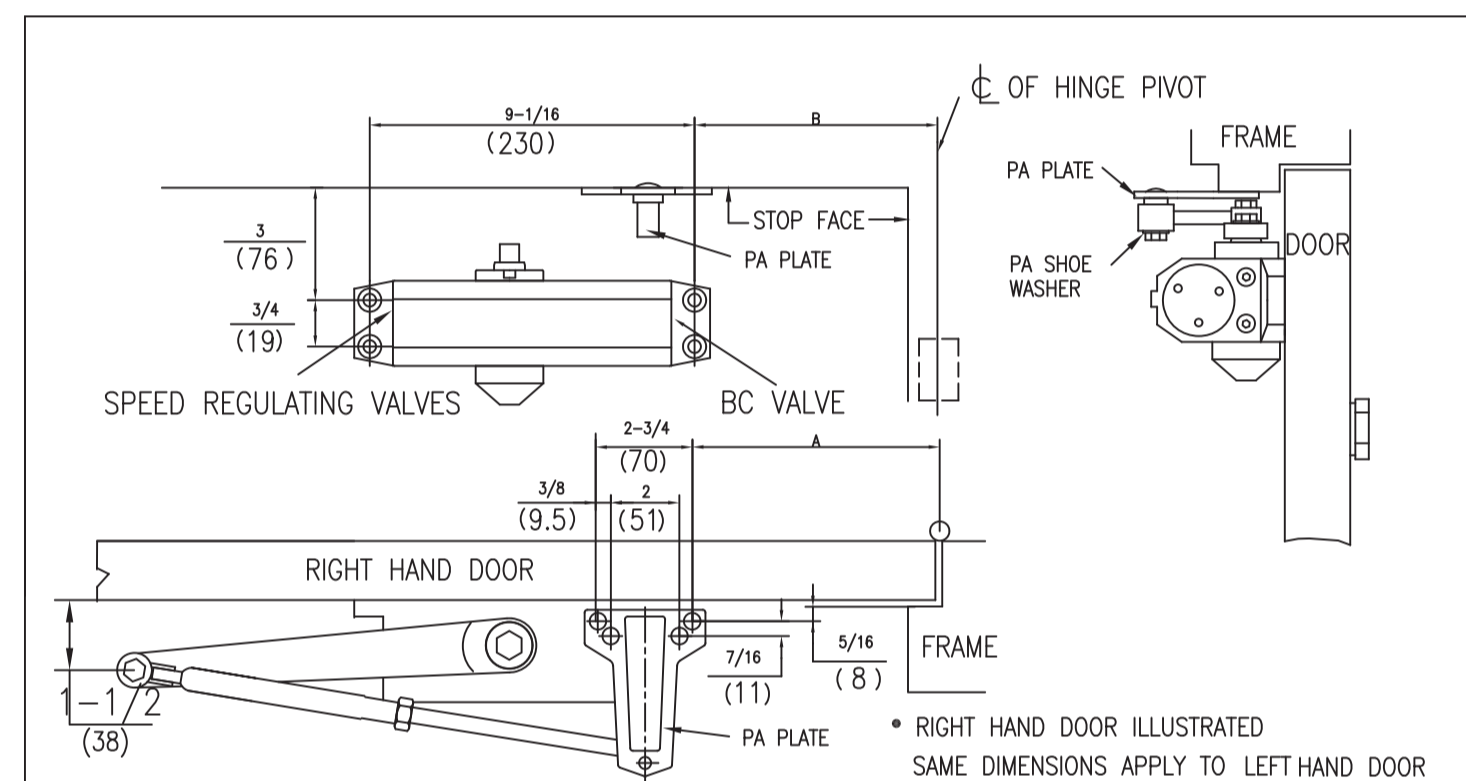
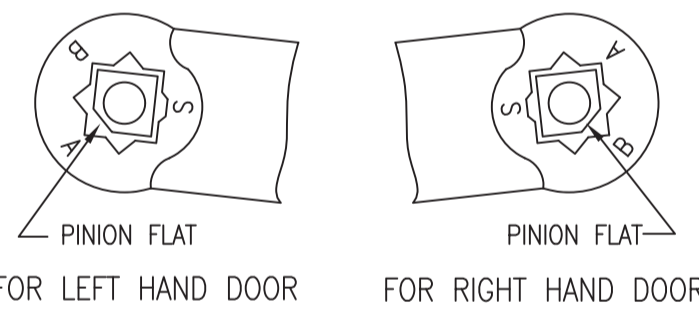


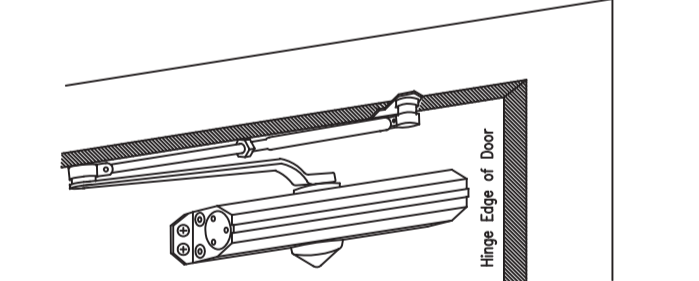
## PARALLEL ARM INSTALLATION



DIMENSIONS "A"		DIMENSIONS "B"		OPENING
inches	mm	inches	mm	
9-1/4	235	7-5/8	194	TO 100"
7-3/4	197	6-1/8	156	101" TO 150"
5-3/4	146	4-1/8	105	OVER 151"



PINION FLAT FOR LEFT HAND DOOR PINION FLAT FOR RIGHT HAND DOOR

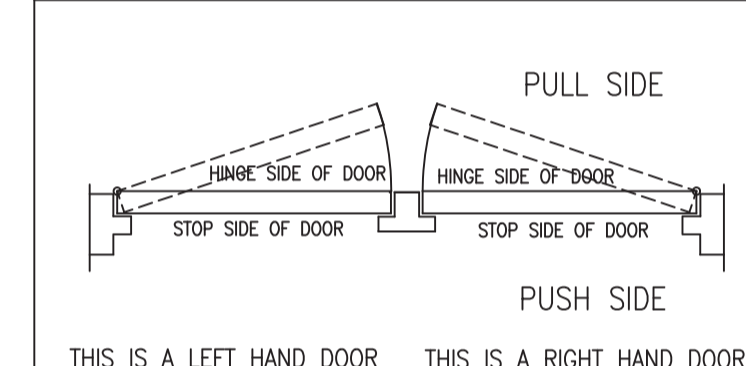


4

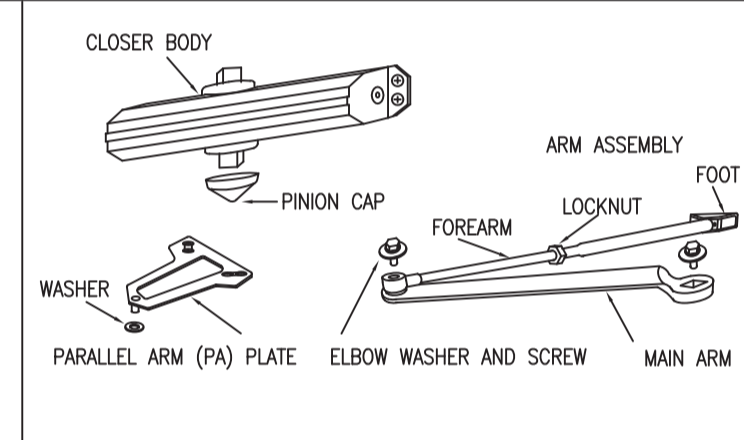
## DOOR CLOSER

### INSTALLATION INSTRUCTIONS

#### CHART TO DETERMINE HAND OF DOOR

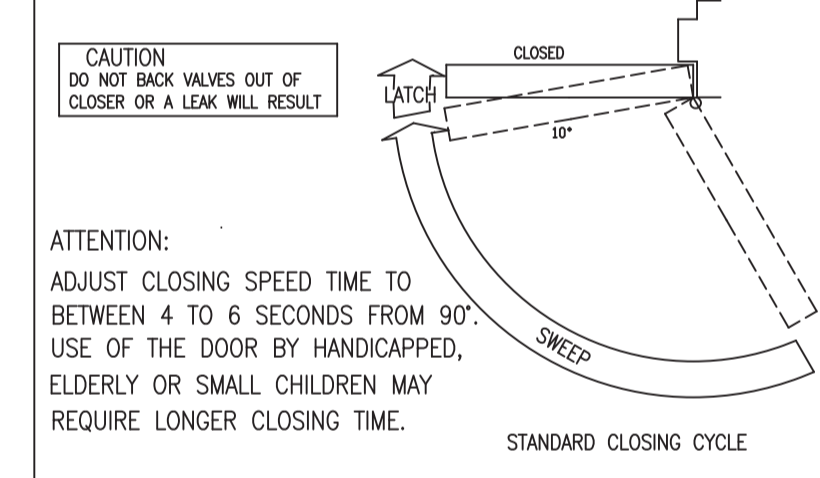


#### COMPONENTS

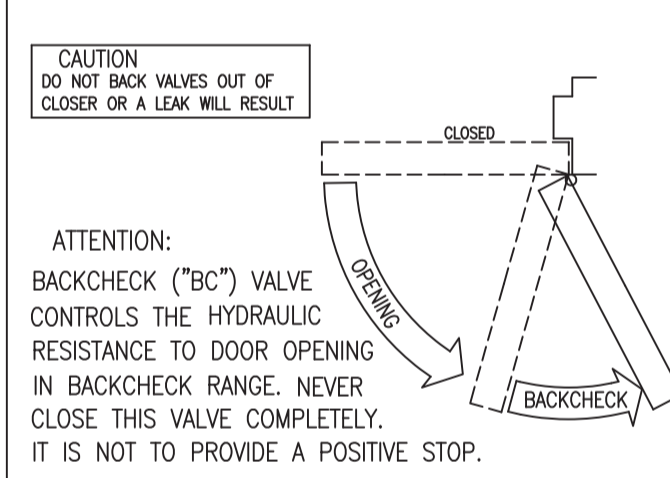


#### CONTROL FUNCTION

##### CLOSING SPEED CONTROL

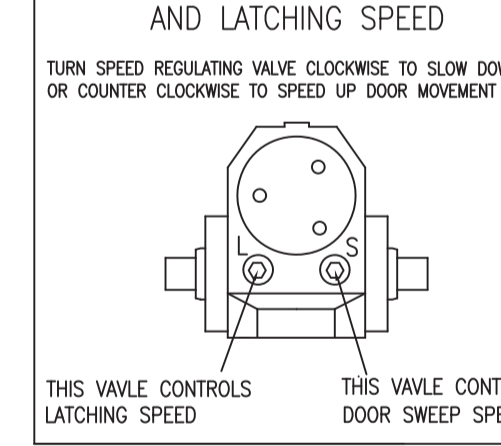


##### OPENING DOOR CONTROL

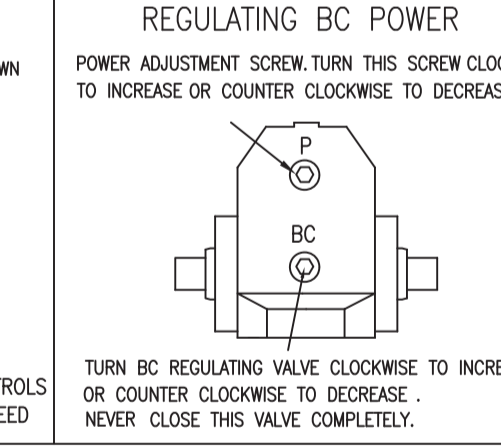


#### FINAL ADJUSTMENT AND REGULATING PROCEDURES

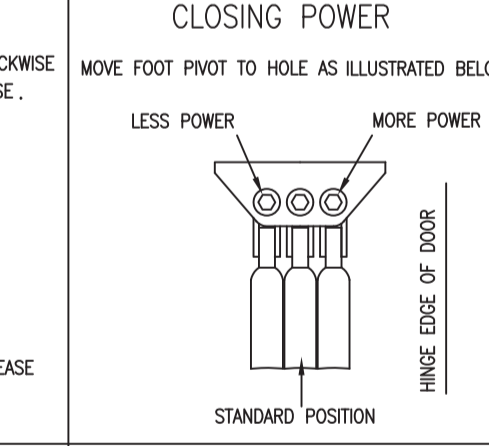
##### REGULATING DOOR SPEED AND LATCHING SPEED



##### REGULATING SPRING POWER REGULATING BC POWER

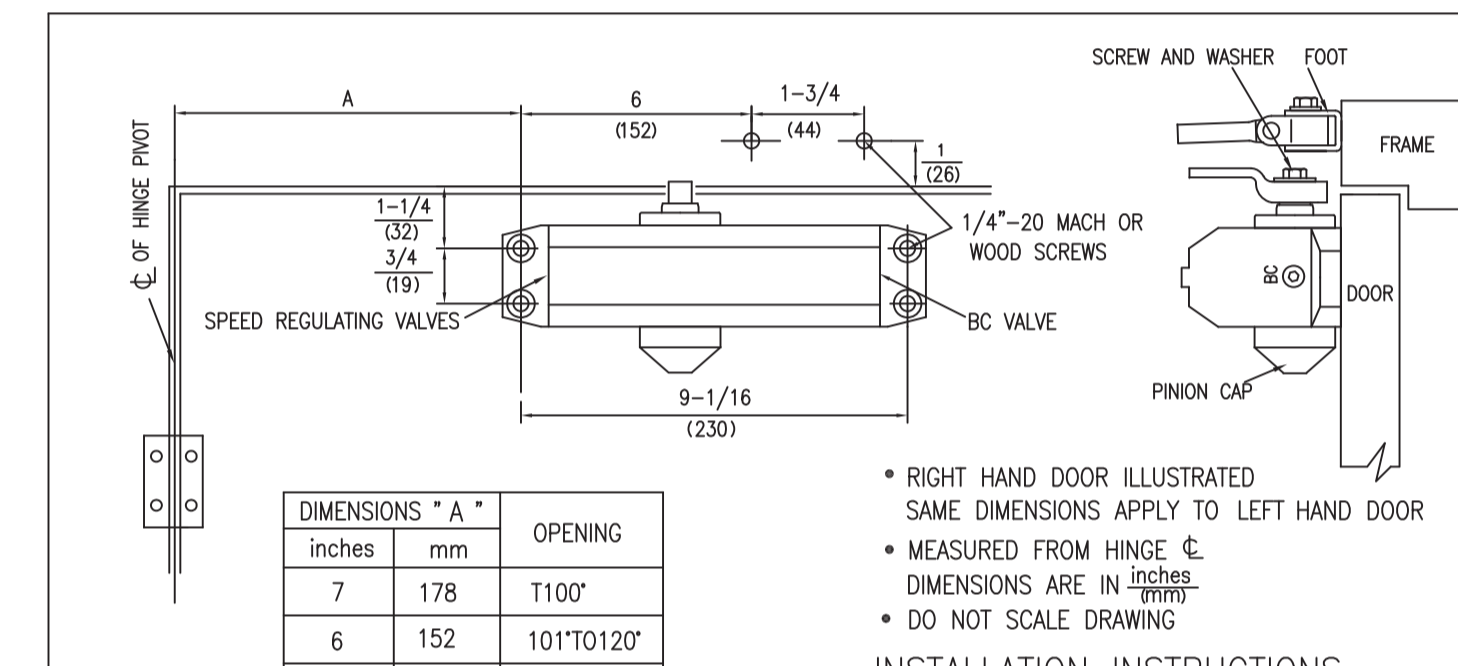


##### ADJUSTING FOOT FOR CLOSING POWER



1

## REGULAR ARM INSTALLATION



DIMENSIONS "A"		OPENING
inches	mm	
7	178	T100"
6	152	101" TO 120"
3-1/2	89	*121" TO 180"

#### INSTALLATION INSTRUCTIONS

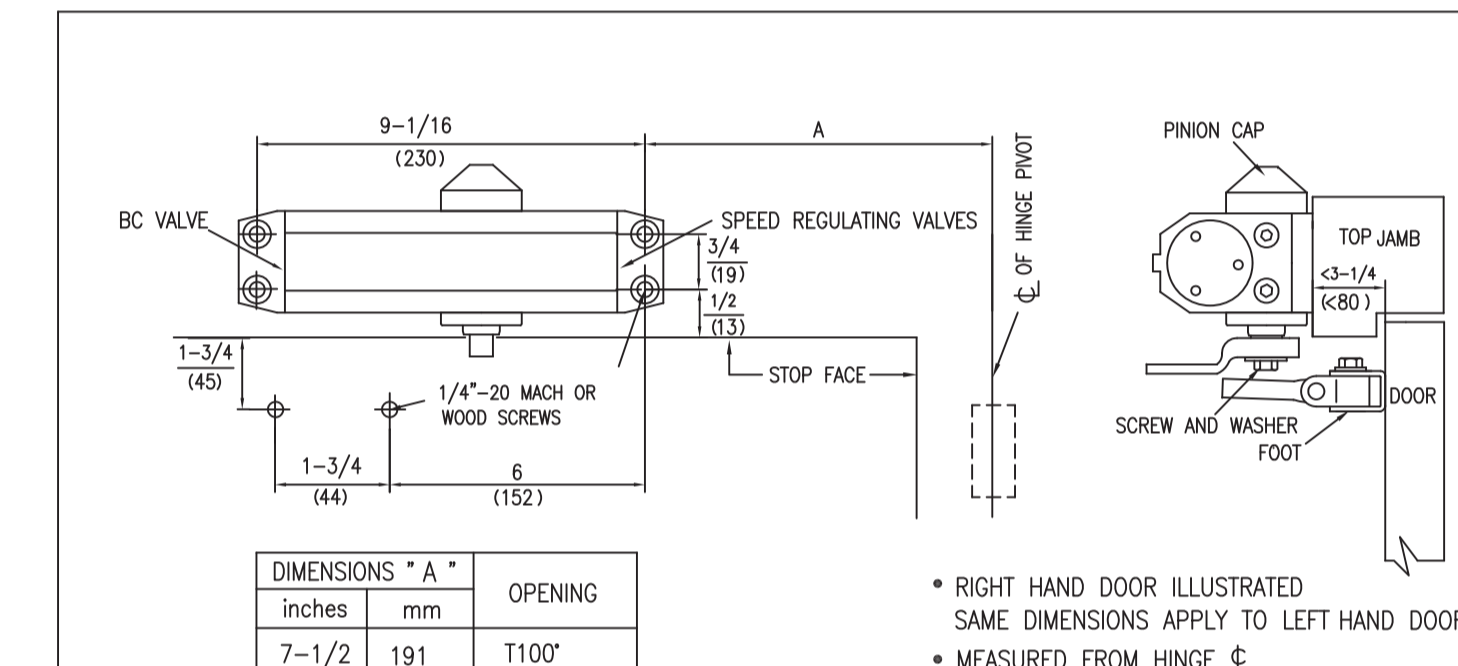
1. SELECT DEGREE OF DOOR. USE DIMENSIONS SHOWN IN CHART AND ILLUSTRATION ABOVE TO MARK LOCATION OF ATTACHING SCREWS ON DOOR AND FRAME PREPARE HOLES
2. ASSEMBLE MAIN ARM TO CLOSER.
3. ATTACH CLOSER TO DOOR WITH SPEED REGULATING VALVES TOWARD HINGE.
4. ATTACH THE FOOT OF THE FOREARM TO FRAME.
5. ADJUST LENGTH OF FOREARM TO POSITION FOREARM AT RIGHT ANGLE TO FRAME.
6. SNAP PINION CAP OVER SPINDLE AT BOTTOM OF CLOSER.
7. ADJUST CLOSER.

The chart is suitable for power adjustment door closer

EXTERIOR DOORS	MAXIMUM DOOR WIDTH	5 lb-F	FULL TURNS REQUIRED
8.5" (216)	34" (864)	13	13 TURNS C.C.W.
30" (762)	38" (965)	15	15 TURNS C.C.W.
36" (914)	48" (1219)	15	15 TURNS C.C.W.
42" (1067)	54" (1372)	15	15 TURNS C.C.W.
48" (1219)	60" (1524)	10	10 TURNS C.C.W.

2

## TOP JAMB INSTALLATION



DIMENSIONS "A"		OPENING
inches	mm	
7-1/2	191	T100"
6	152	101" TO 120"
3-1/2	89	*121" TO 180"

#### INSTALLATION INSTRUCTIONS

1. SELECT DEGREE OF DOOR. USE DIMENSIONS SHOWN IN CHART AND ILLUSTRATION ABOVE TO MARK LOCATION OF ATTACHING SCREWS ON DOOR AND FRAME PREPARE HOLES
2. ASSEMBLE MAIN ARM TO CLOSER.
3. ATTACH CLOSER TO FRAME WITH SPEED REGULATING VALVES TOWARD HINGE.
4. ATTACH THE FOOT OF THE FOREARM TO DOOR.
5. ADJUST LENGTH OF FOREARM TO POSITION FOREARM AT RIGHT ANGLE TO FRAME.
6. SNAP PINION CAP OVER SPINDLE AT BOTTOM OF CLOSER.
7. ADJUST CLOSER.

About Power Adjustment

Before installation, Adjust the spring power as chart in page 2. Adjust spring power DO NOT exceed the maximum turn .  
The spring power has been reset on 0 turns in factory.

3