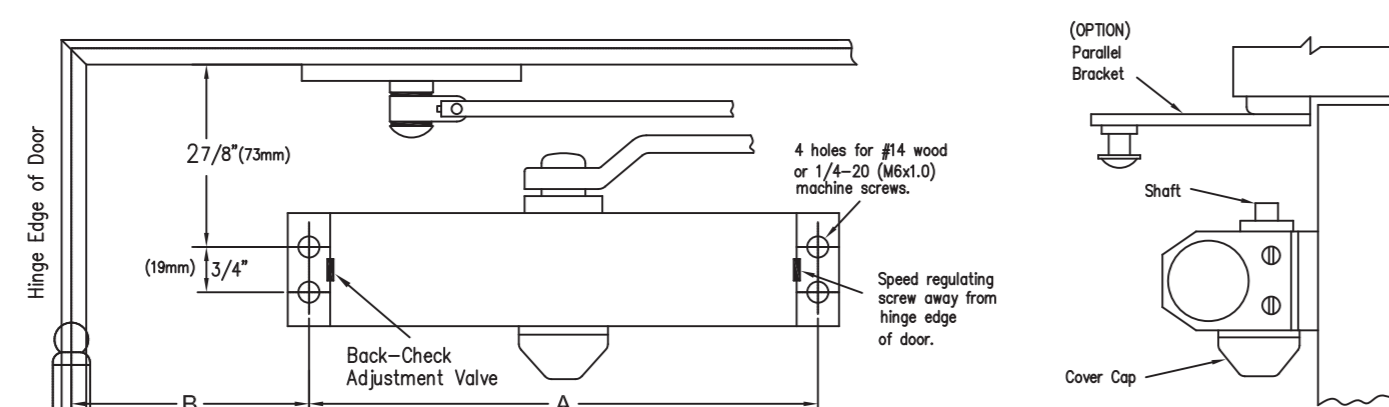
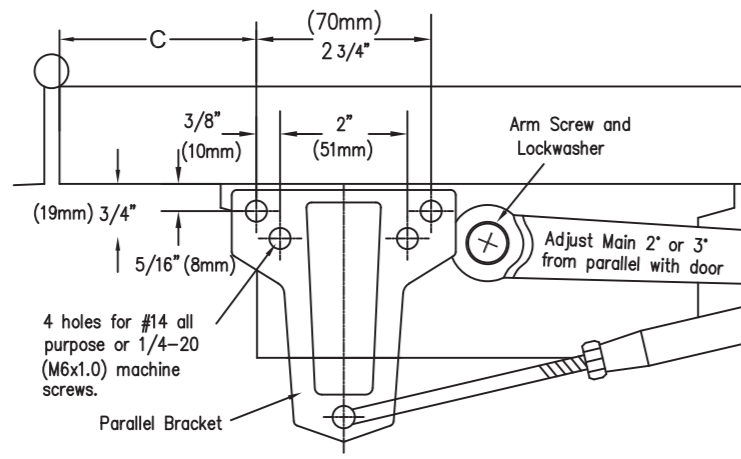


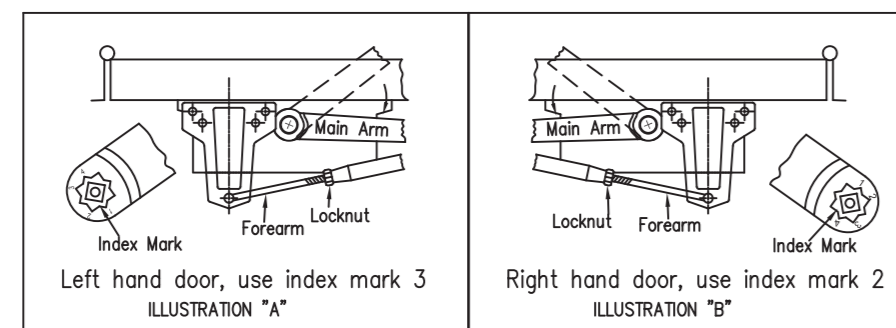
## PARALLEL ARM INSTALLATION



A	FOR OPENING TO 120"		FOR OPENING TO 120"-180"	
	B	C	B	C
8 3/4" 228mm	8 3/8" 215mm	9 1/4" 235mm	7" 178mm	7 1/2" 190mm



### POSITION OF ARMS AND INDEX SETTINGS

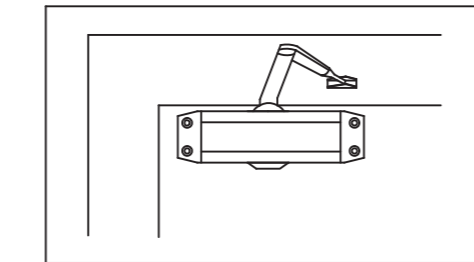


IN-DC-25DV-N

4

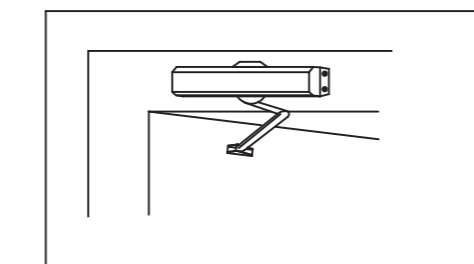
## DOOR CLOSER INSTALLATION INSTRUCTIONS

### Standard Application



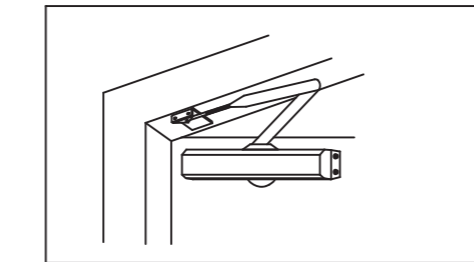
PAGE 2  
STANDARD INSTALLATION  
CLOSER MOUNTED ON DOOR  
ON PULL SIDE

### Top Jamb Application



PAGE 3  
TOP JAMB INSTALLATION  
CLOSER MOUNTED ON TOP JAMB  
ON PUSH SIDE OF DOOR

### Parallel Arm Application



PAGE 4  
PARALLEL ARM INSTALLATION  
CLOSER MOUNTED ON DOOR  
ON PUSH SIDE

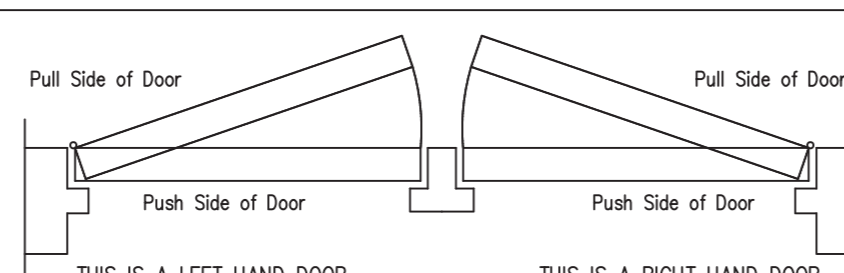
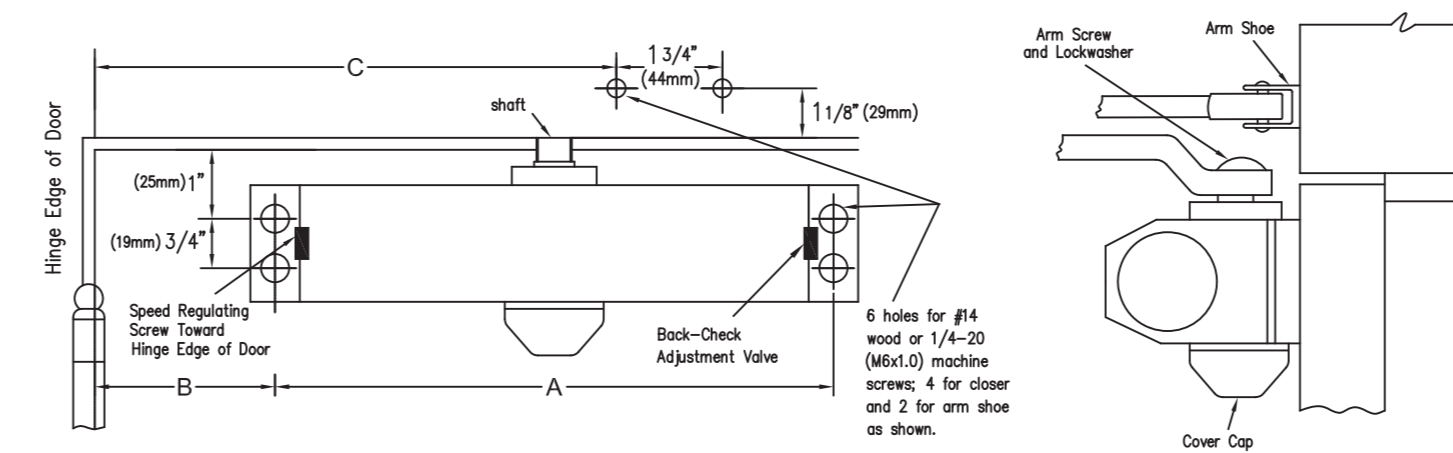


CHART  
TO DETERMINE  
HAND OF DOOR

1

## REGULAR ARM INSTALLATION

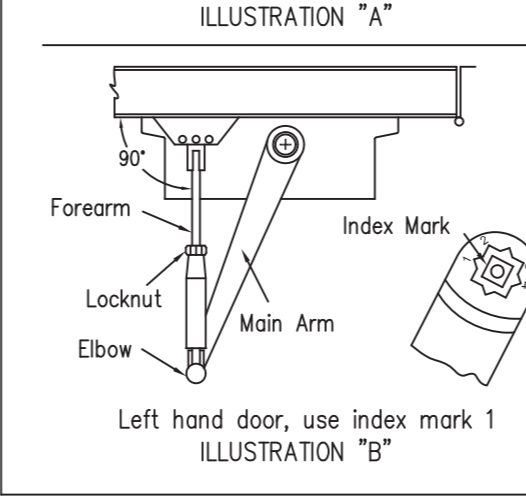
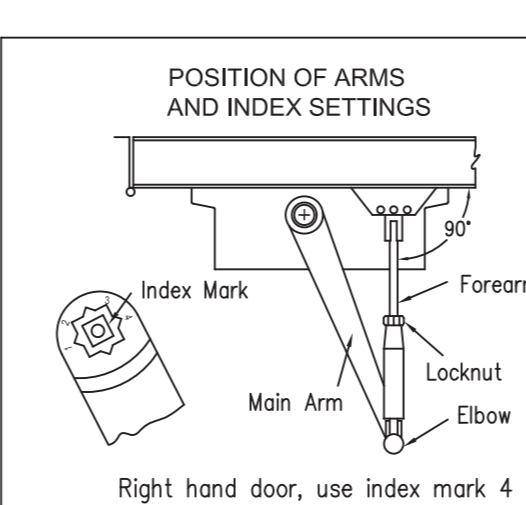
THIS TEMPLATE COVERS REGULAR ARM INSTALLATIONS TO 180" OPENINGS.



RIGHT HAND DOOR ILLUSTRATED  
Some dimensions apply for Left Hand Door measured from the hinge edge.

A	FOR OPENING TO 120"		FOR OPENING TO 120"-180"	
	B	C	B	C
8 3/4" 228mm	6" 152mm	12" 305mm	4 1/2" 114mm	10" 254mm

### POSITION OF ARMS AND INDEX SETTINGS

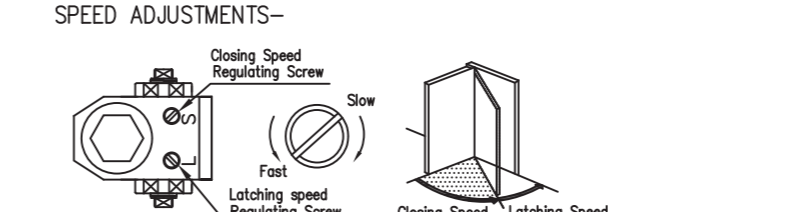


2

### INSTALLATION INSTRUCTIONS

- Select degree of opening and use dimensions shown in above template to mark four holes on door for closer and two holes on frame for arm shoe.
- Drill pilot holes in door and frame for #14 wood screws or drill and tap for 1/4"-20(M6x1.0) machine screws.
- Mount closer on door WITH SPEED REGULATING SCREW TOWARD HINGE EDGE.
- Place main arm on shaft on top of closer at proper index mark as illustrated. FOR RIGHT HAND DOOR No.4 (Illustration "A"). FOR LEFT HAND DOOR No.1 (Illustration "B"). Tighten arm screw with lockwasher securely.
- Attach the arm shoe of the forearm to the frame.
- Adjust length of forearm so when it is attached to main arm it will be at a right angle (90°) to door when door is closed and assemble at elbow then tighten locknut.
- Place cover cap over shaft at bottom of closer and turn slightly to secure.

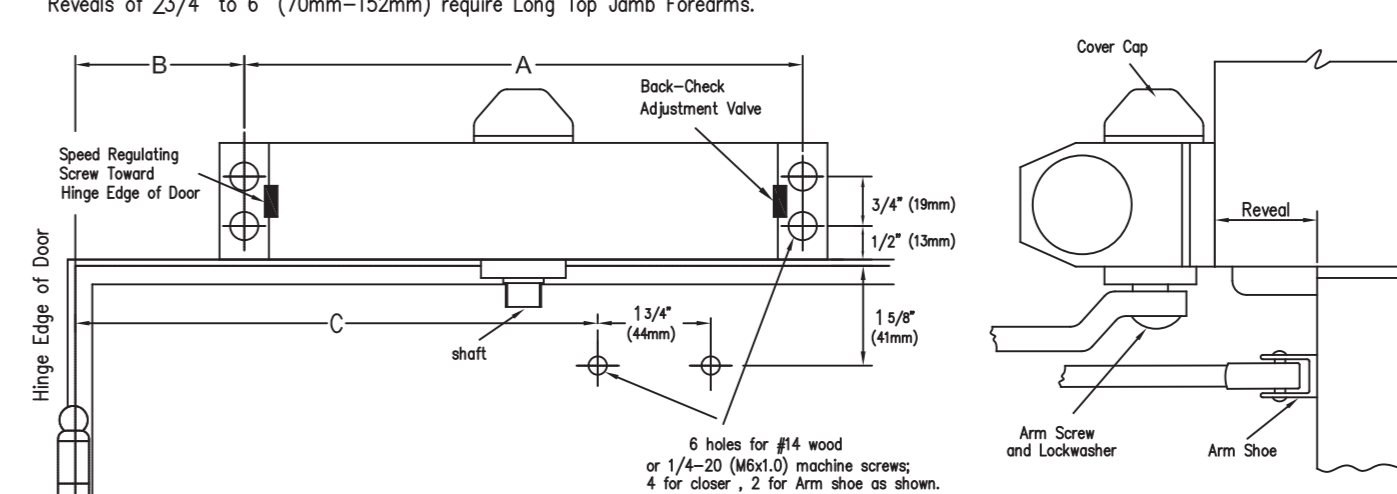
ADJUSTMENT INSTRUCTIONS  
POWER - Closing power has been set at factory for average conditions. If more closing power is required, move forearm from center hole in arm shoe to hole closest main arm. If less closing power is required, move forearm to hole farthest from main arm.



BACK - CHECK ADJUSTMENT - (with B.C.) - is controlled by the adjustment valve (marked BC on the closer). BACK-CHECK is now set for a soft action. To INCREASE Back-check action turn valve CLOCKWISE. To DECREASE, or to TURN OFF Back - check action turn valve COUNTER CLOCKWISE.

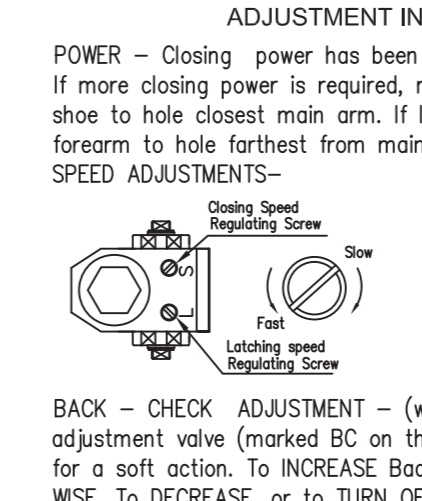
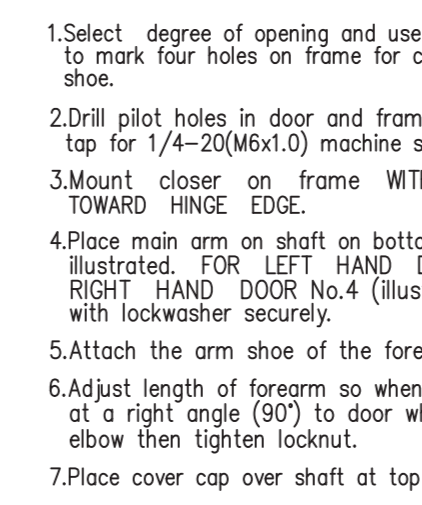
## TOP JAMB INSTALLATION

THIS TEMPLATE COVERS REGULAR ARM INSTALLATIONS TO 180" OPENINGS. Reverts of 2 3/4" to 6" (70mm-152mm) require Long Top Jamb Forearms.



A	FOR OPENING TO 120"		FOR OPENING TO 120"-180"	
	B	C	B	C
8 3/4" 228mm	6" 152mm	12" 305mm	3 7/8" 98mm	8 3/4" 228mm

### POSITION OF ARMS AND INDEX SETTINGS

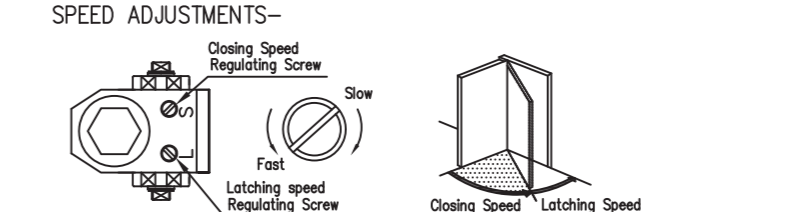


3

### INSTALLATION INSTRUCTIONS

- Select degree of opening and use dimensions shown in above template to mark four holes on frame for closer and two holes on door for arm shoe.
- Drill pilot holes in door and frame for #14 wood screws or drill and tap for 1/4"-20(M6x1.0) machine screws.
- Mount closer on frame WITH SPEED REGULATING SCREW TOWARD HINGE EDGE.
- Place main arm on shaft on bottom of closer at proper index mark as illustrated. FOR LEFT HAND DOOR No.1 (Illustration "A"). FOR RIGHT HAND DOOR No.4 (Illustration "B"). Tighten arm screw with lockwasher securely.
- Attach the arm shoe of the forearm to the door.
- Adjust length of forearm so when it is attached to main arm it will be at a right angle (90°) to door when door is closed and assemble at elbow then tighten locknut.
- Place cover cap over shaft at top of closer and turn slightly to secure.

ADJUSTMENT INSTRUCTIONS  
POWER - Closing power has been set at factory for average conditions. If more closing power is required, move forearm from center hole in arm shoe to hole closest main arm. If less closing power is required, move forearm to hole farthest from main arm.



BACK - CHECK ADJUSTMENT - (with B.C.) - is controlled by the adjustment valve (marked BC on the closer). BACK-CHECK is now set for a soft action. To INCREASE Back-check action turn valve CLOCKWISE. To DECREASE, or to TURN OFF Back - check action turn valve COUNTER CLOCKWISE.