

TC4361 SERIES

GRADE 1



HEAVY DUTY GRADE 1 CLOSER

The TC4361 Series is recommended for use on heavy duty commercial, architectural and institutional applications. It is ideal for new construction and renovations. It has a full selection of accessories to accommodate the requirements of any application.

The series is tri-packed standard. Closers with non-hold open arms are UL listed for "A" label fire doors. Fully compliant with opening force requirements for ADA and ANSI/BHMA standards.

FEATURES

- Aluminum Alloy body
- Non-handed / reversible
- Slimline cover
- Multi-size springs: 1- 6 adjustable power ADA compliant
- Independent latch, sweep and back-check
- Tri packed- regular, top jamb, parallel arm mount
- Supplied with both wood and machine screws
- 5 year mechanical warranty
- Finish: AL, DU



OPTIONS

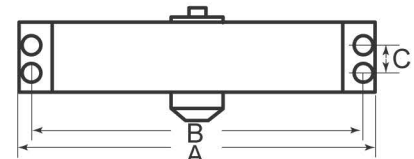
- Heavy Duty- HD

CERTIFICATIONS

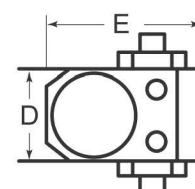
- UL listed R13255
- ANSI A156.2 Grade 1 certified
- ADA compliant

SPECIFICATIONS

DIMENSION DESCRIPTION	300PBFCOV / 300PCOV
A. Length of Closer Body	9 3/4"
B. Horizontal Mounting Holes	9 1/16"
C. Vertical Mounting Holes	3/4"
D. Height of Closer Body	1 3/4"
E. Projection from Door	2 7/8"



FRONT VIEW



300 Series
END VIEW