

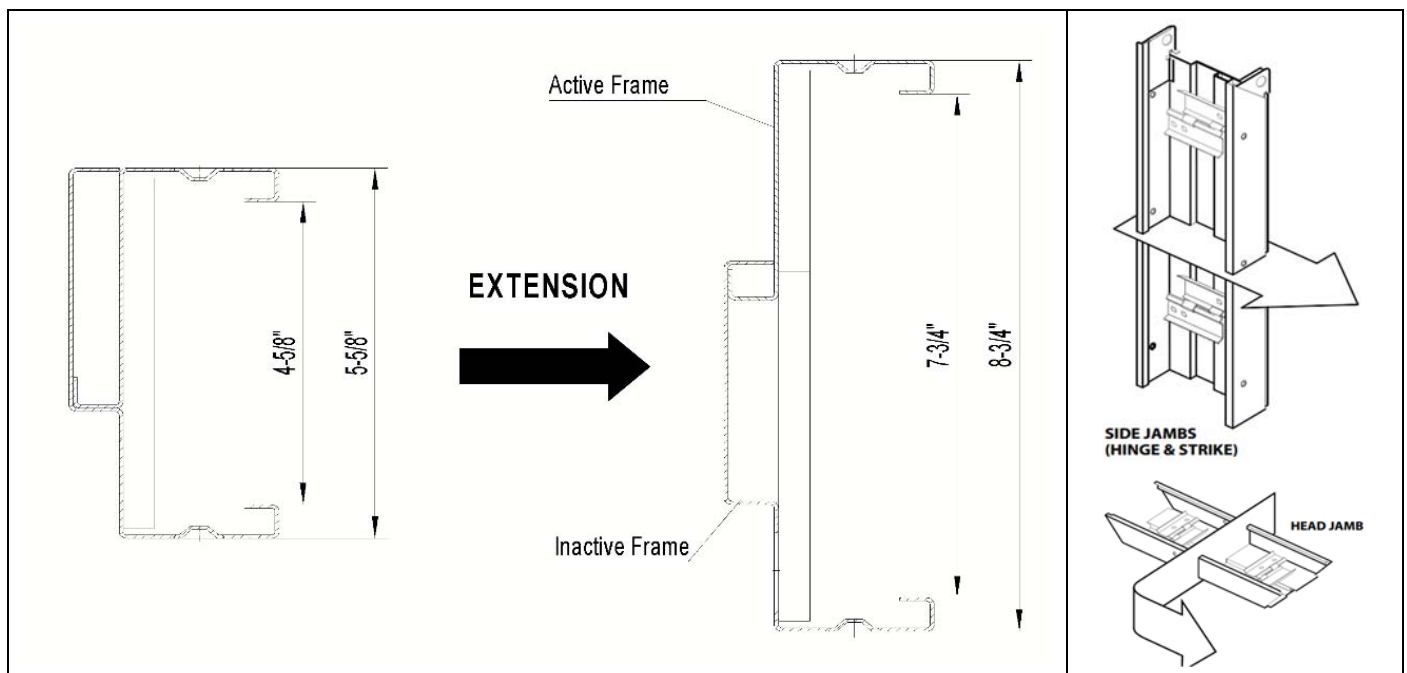
GENERAL INSTALLATION INSTRUCTIONS

16 GAUGE ADJUSTABLE/ EXPANDABLE KNOCK DOWN HOLLOW METAL FRAMES

1. FRAME FEATURES

- 16 Gauge – A40 paintable galvanized steel.
 - Prepped with (3) 4-1/2" high frequency, square corner hinge reinforcements.
 - Fire rated
 - WHI label standard on 6'8", 7'0" and 8'0" hinge jambs (up to 1-1/2 Hrs – Drywall or 3 Hrs Masonry wall).
 - Rubber bumper/silencer holes optional
 - Mechanical K.D. corner connection
 - Faces punched & dimpled for wall anchoring
 - Jamb depths adjustable from 4-5/8" to 7-3/4" and 8-1/2" to 14"
 - 12-Gauge ASA Strike Reinforcement
 - Other sizes and profiles are available in special order
- ** Interior and exterior application

2. FRAME CONSTRUCTIONS



3. ROUGH OPENINGS – the finished rough opening should be:

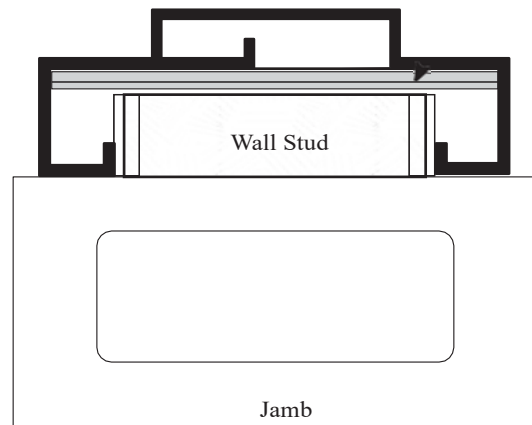
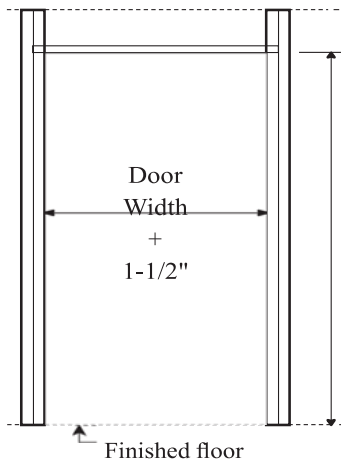
DRYWALL INSTALLATION

Nominal width – plus 1 1/2"

Nominal height – plus 1"

The standard tolerance allows for a 3/4" clearance from the bottom of the door to the bottom of the frame. Check floor covering being used to ensure the clearance is adequate and adjust as necessary by ordering doors with a special undercut or increase height of rough opening and install frames raised from the floor.

The distance from a rough opening to an adjacent wall should be a minimum of 3"




4. ASSEMBLY

With the use of a tape measure, measure the depth of the wall at the location around the door opening which appears to be thickest. Check the measurements at several other locations around the opening to ensure you have chosen the widest dimension the frame must cover.

Slide the frame components together or apart so that the throat is 1/16" larger than the widest portion of the opening. This will ensure the jambs remain relatively square during installation.

5. INSTALLATION PROCEDURE

Checking List

			
<i>Laser Levelling Device</i>	<i>Plumb Bobs</i>	<i>Spirit Level Ruler</i>	<i>Platform Ladder</i>
			
<i>Battery Operated Impact Drill</i>	<i>Measuring Tape</i>	<i>Timber Shims</i>	<i>Pail/Bucket</i>

- Check the structural openings before installation of frames.
 - Check the frame size.
 - Check for Finishing Floor Level (FFL) reference line.
 - Check if there are other finishes to the structural wall and door frame.
- A)** Frames are packed separately RH hinge jambs, LH hinge jambs, RH strikes, LH strikes and heads. Distribute the appropriate frame parts to rooms as required.
 - B)** Cut a piece of 2x4 or 2x2 timber shims as a spacer to ensure the width of the opening with the frame installed is identical at the bottom and the top. When installing the Frames the spacer should be the nominal dimension.
 - C)** Position the Strike jamb in the opening and push it tight against the stud.
 - D)** Hold the header at an angle to the strike and engage the corner tabs, but do not lock. Push the header towards the jamb and upwards part way into the opening.
 - E)** Hold the Hinge jamb at an angle to the free end of the header and engage the corner tabs, but do not lock. Put the top of the Hinge jamb into the header and lift the head-jamb assembly into position in the opening closing the miters.
 - F)** Lock the miters by tapping the top tab of each jamb with a mallet towards the head
 - G)** The bottom of the jambs should be tight to the floor, but it may be necessary to shim one side to adjust for uneven floor conditions in order to keep the miters closed and the opening square.
 - H)** Fasten the bottom of the hinge jamb with screws in the holes provided.

Screw the Jamb bottom by dimpled hole



or

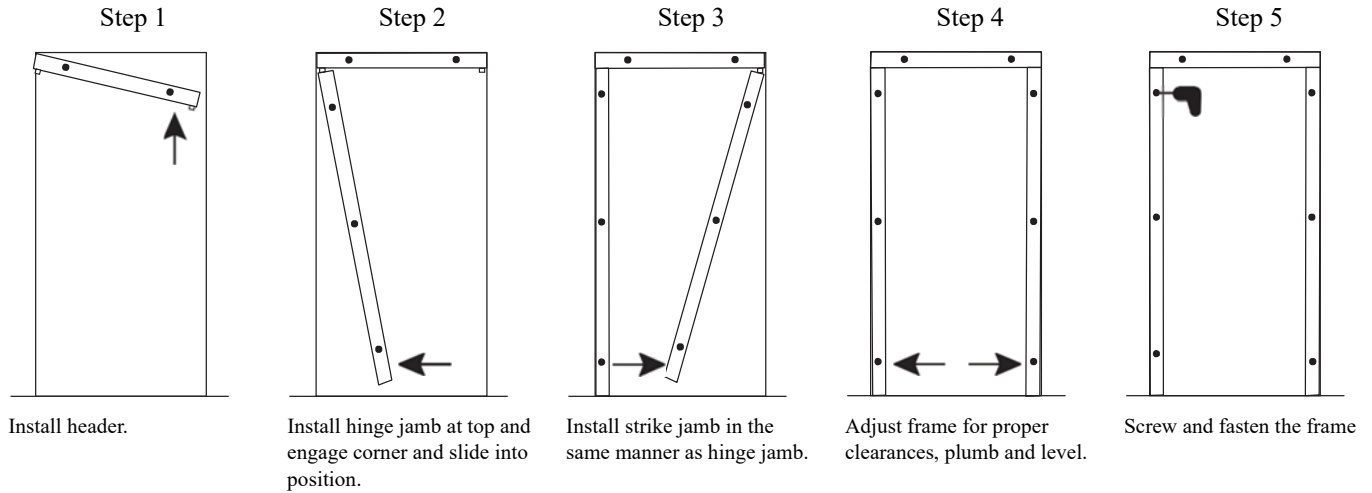
Bending the strip



Screw the strip



- I) Lay the 2x4 timber shims in the opening and move the jambs against the spacer keeping the miters closed.
- J) At this point, plumb the hinge jamb and fasten to the wall through the holes provided.
- K) After the hinge jamb has been plumbed and securely fastened, square the head and plumb the strike jamb, making sure the miters at the corners are tight. Fasten the head, then the strike jamb in sequence. Remove 2x4 spacer.



Your Trusted Hollow Metal Doors Supplier

Fast Nationwide Shipping

Quick delivery across all 50 states with tracked shipping options.

Quality Guaranteed

Our hollow metal doors supplier standards meet ANSI and industry specifications.

Expert Support

From hollow metal frames to door closers, our team helps you spec the right product.

Competitive Pricing

Volume pricing available for contractors, builders and hardware distributors across the USA.